



MONTHLY MEMBERSHIP PROGRESS REPORT

District 43 T

Results as of: 05/31/2018

GMT: STEVE ANTON

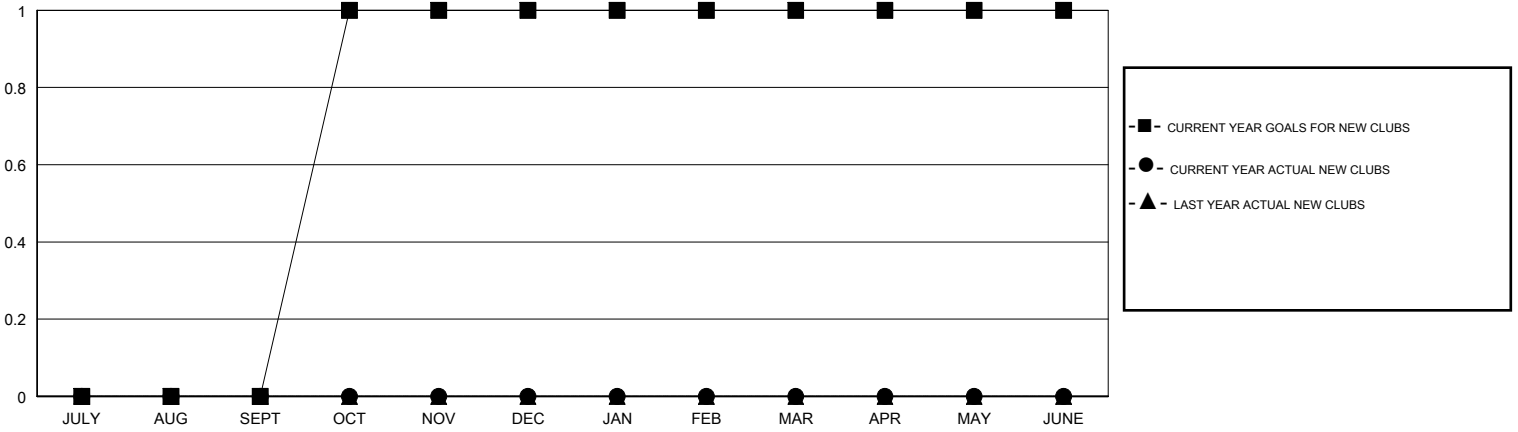
LOCATION KENTUCKY

GMT CA

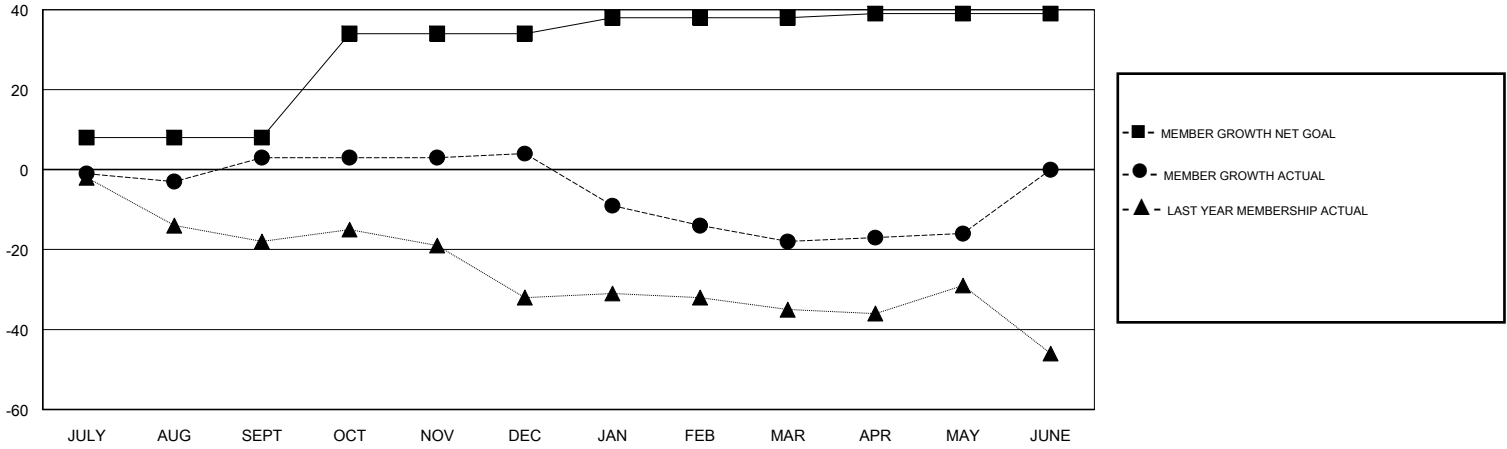
Clubs			
RESULTS FOR 2017-2018			
QUARTER	NEW CLUB GOAL	NEW CLUBS	DROPPED CLUBS
JULY/AUG/SEPT	0	0	0
OCT/NOV/DEC	1	0	0
JAN/FEB/MAR	0	0	0
APR/MAY/JUNE	0	0	0

Members			
RESULTS FOR 2017-2018			
QUARTER	MEMBER GROWTH NET GOAL	MEMBER GROWTH ACTUAL	DROPPED MEMBERS ACTUAL (including transfers)
JULY/AUG/SEPT	8	15	8
OCT/NOV/DEC	26	4	2
JAN/FEB/MAR	4	4	25
APR/MAY/JUNE	1	16	12

GOALS AND ACTUAL NEW CLUBS CUMULATIVE



GOALS AND ACTUAL MEMBERS CUMULATIVE



DROPPED CLUBS: 0	13 CLUBS OF 29 ADDED 1 OR MORE NEW MEMBERS	<u>GENDER DISTRIBUTION</u> MALE 475 (75.28%) FEMALE 156 (24.72%) Women Percentage Fiscal Year Goal: 25%
<u>DROPPED MEMBERS</u> DECEASED 12 CLUB CANCELLED 0 OTHER 35 TOTAL 47	CLICK HERE FOR CUMULATIVE MEMBERSHIP DATA	TOTAL FAMILY UNIT MEMBERS 134 FAMILY MEMBERS PAYING HALF DUES 68